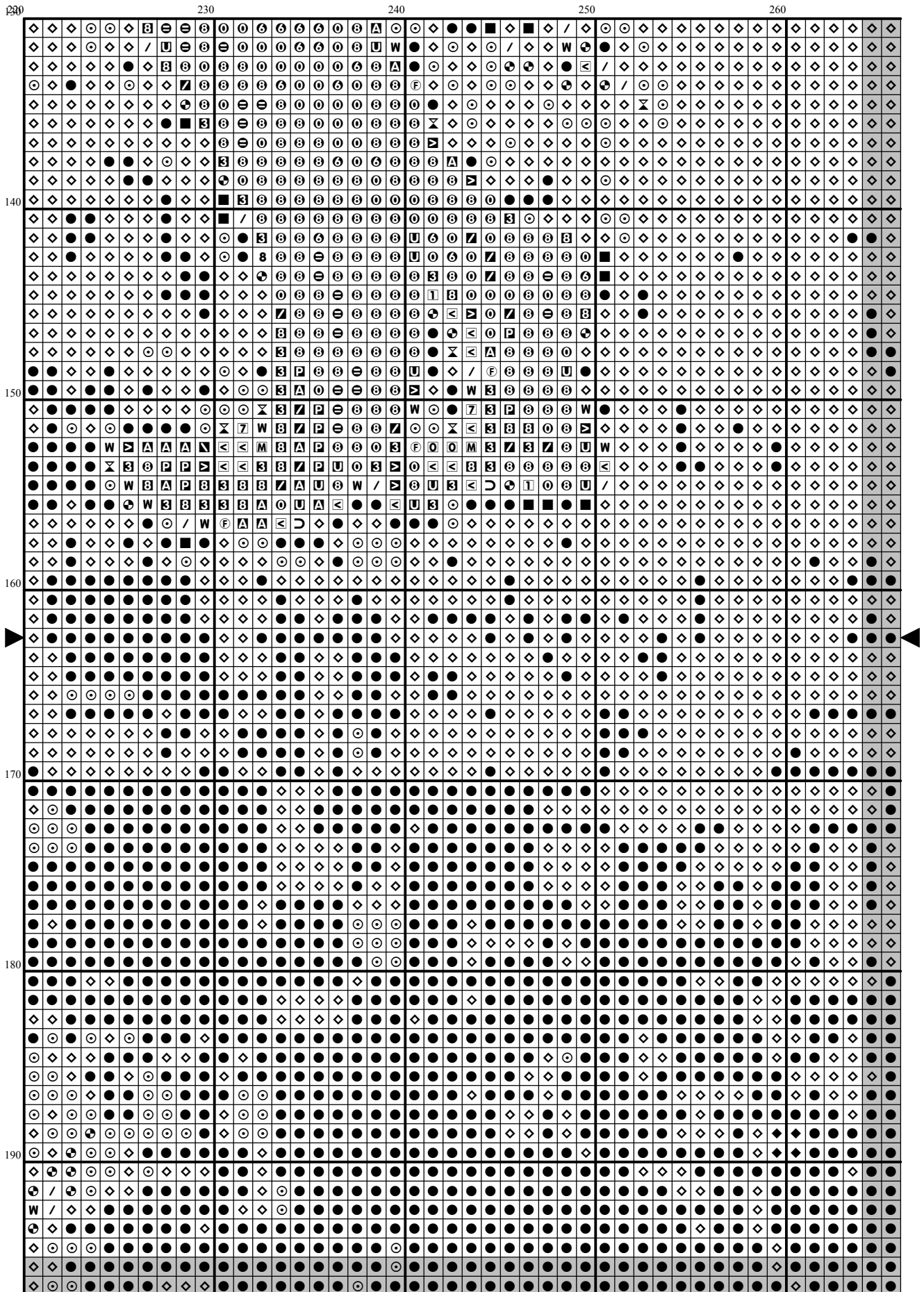
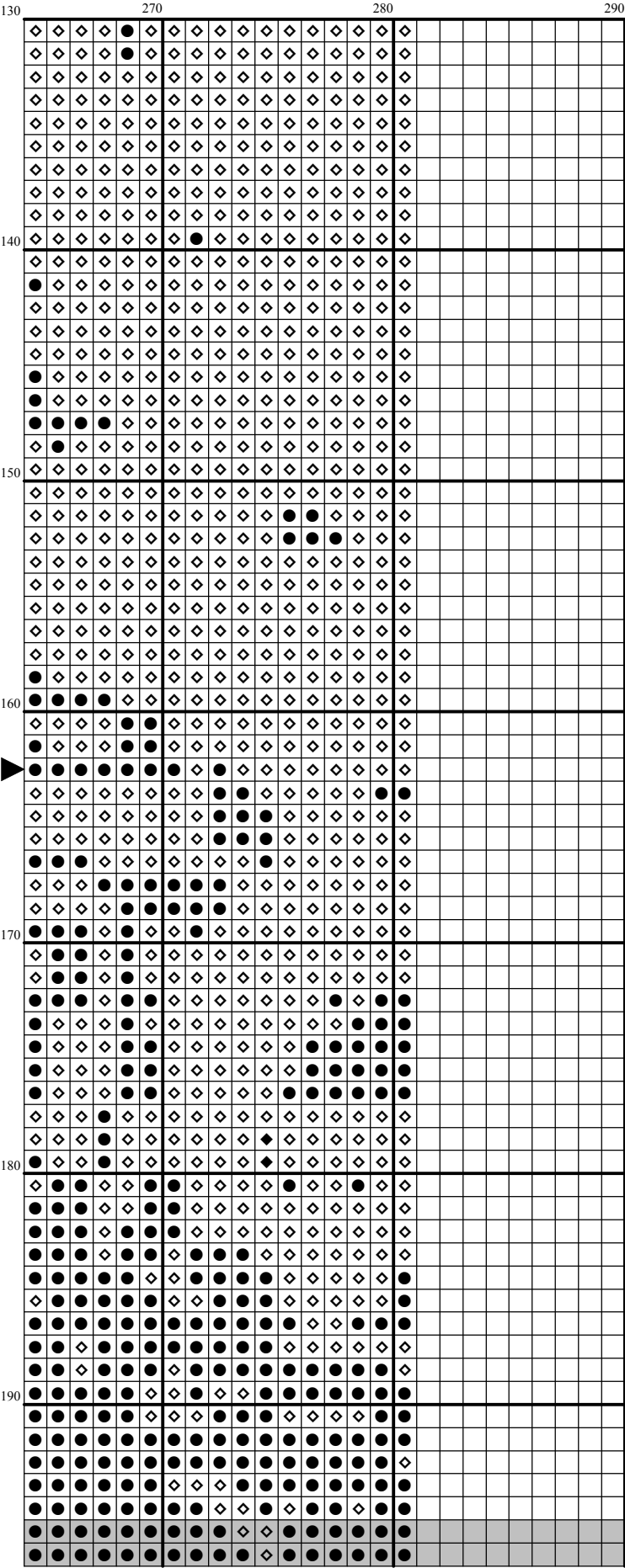
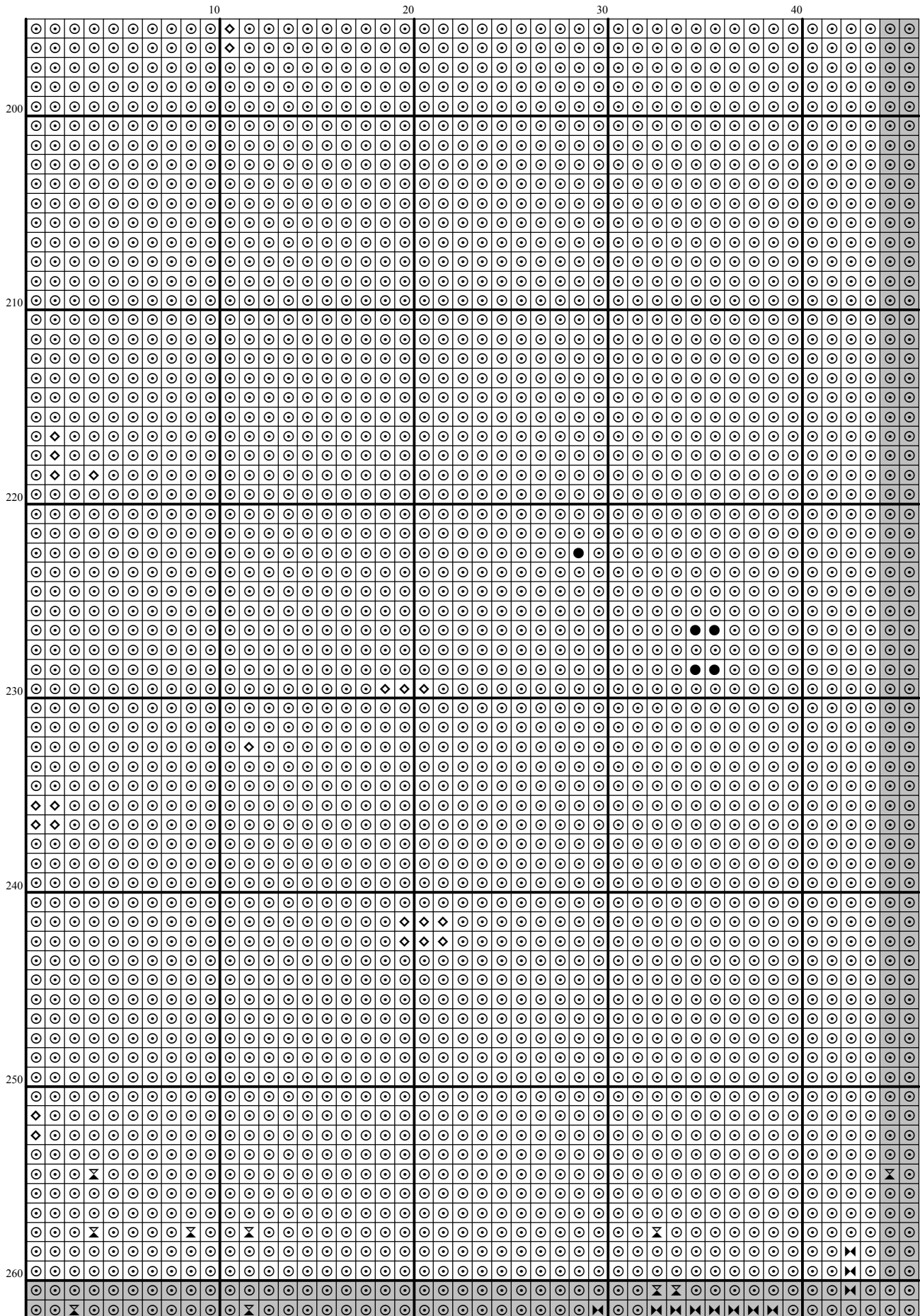


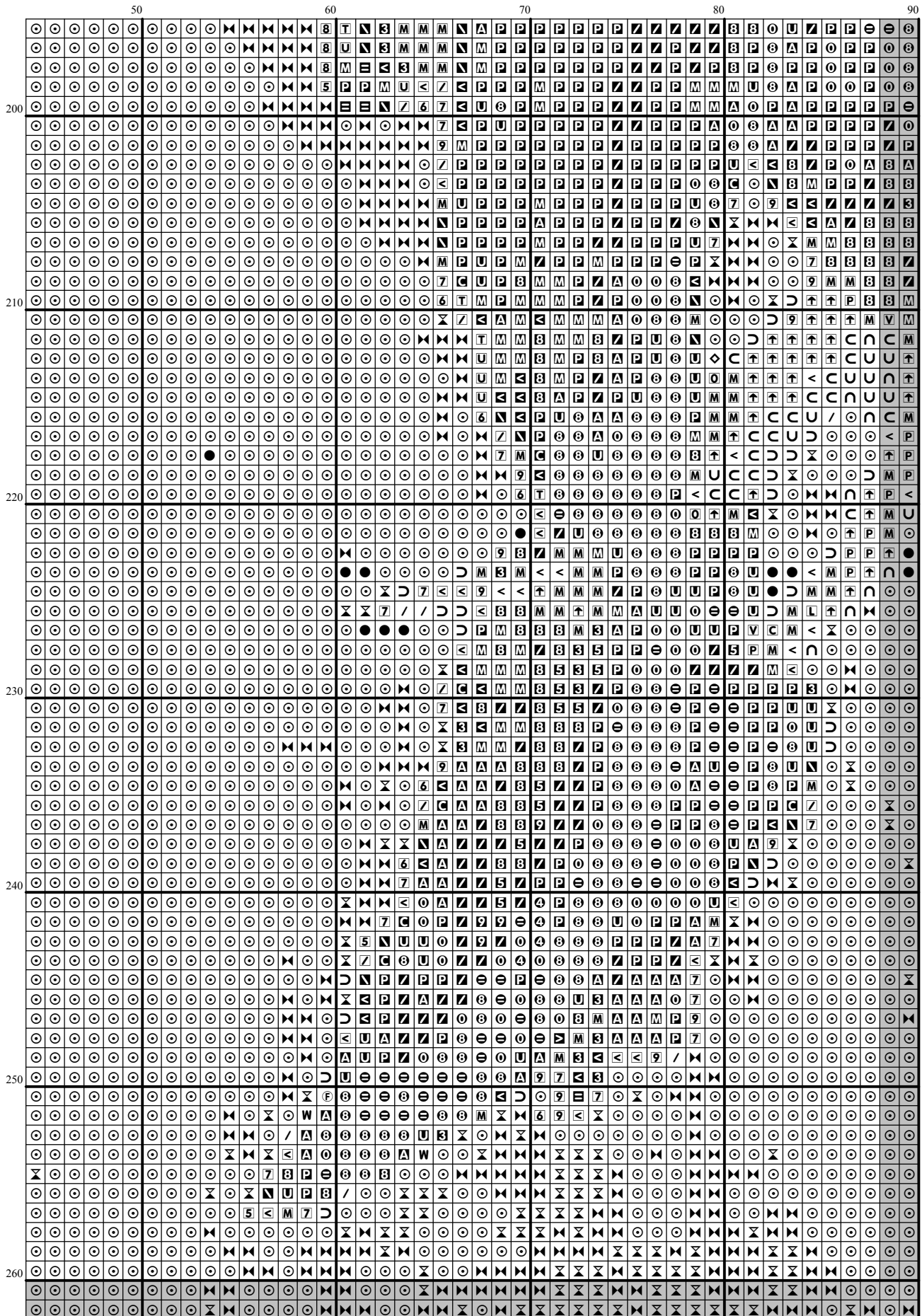
[illegible]

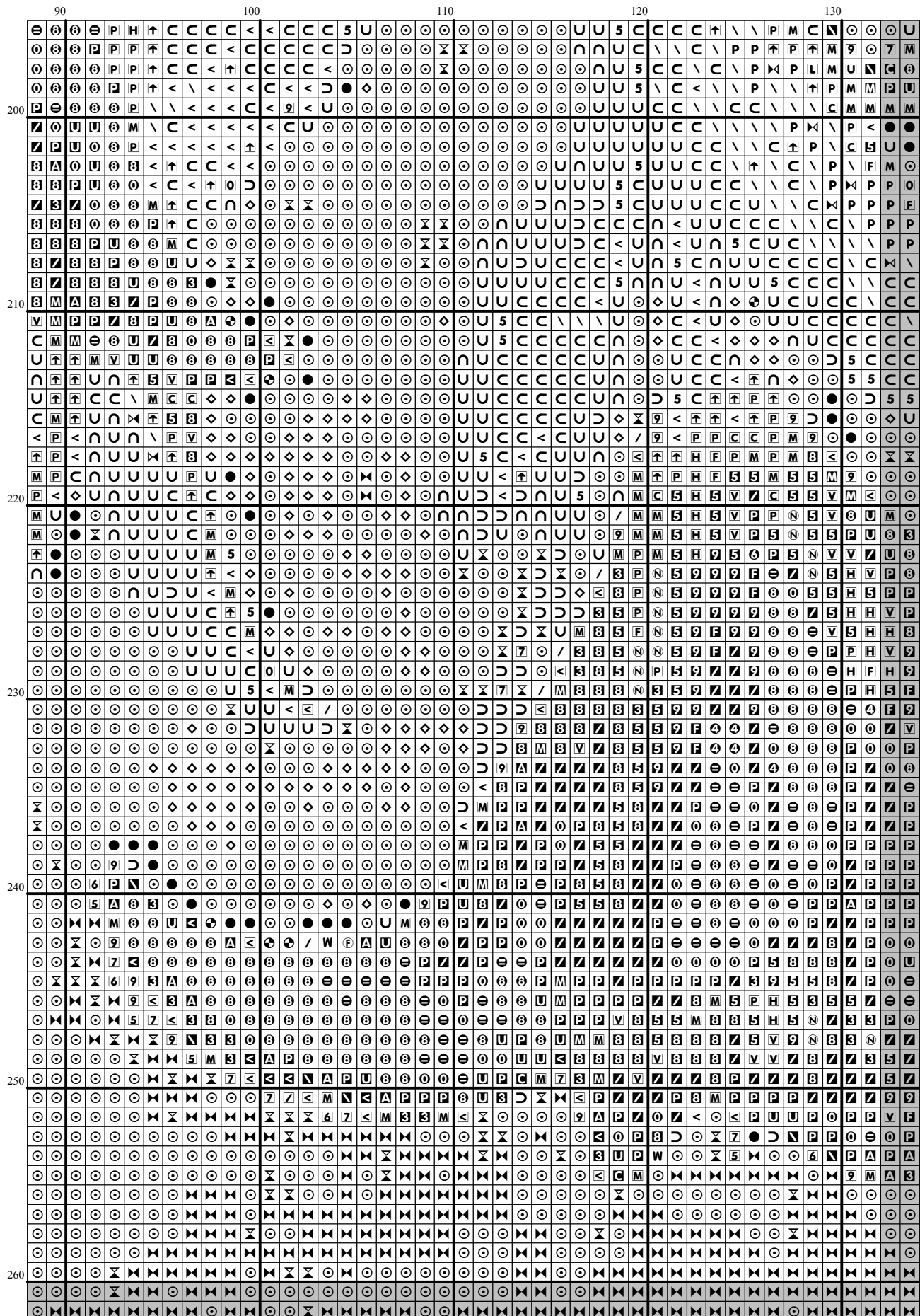
[illegible]

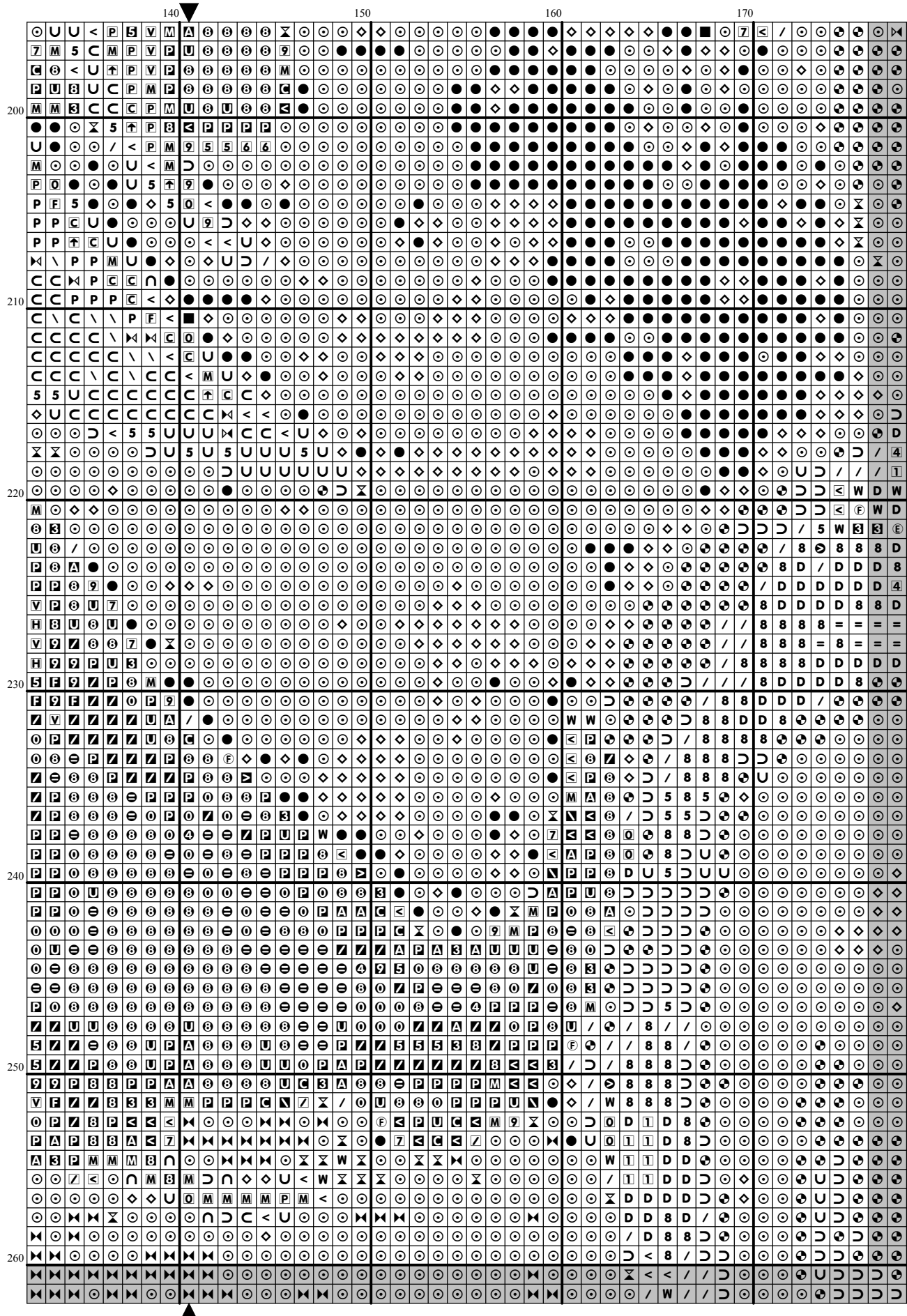


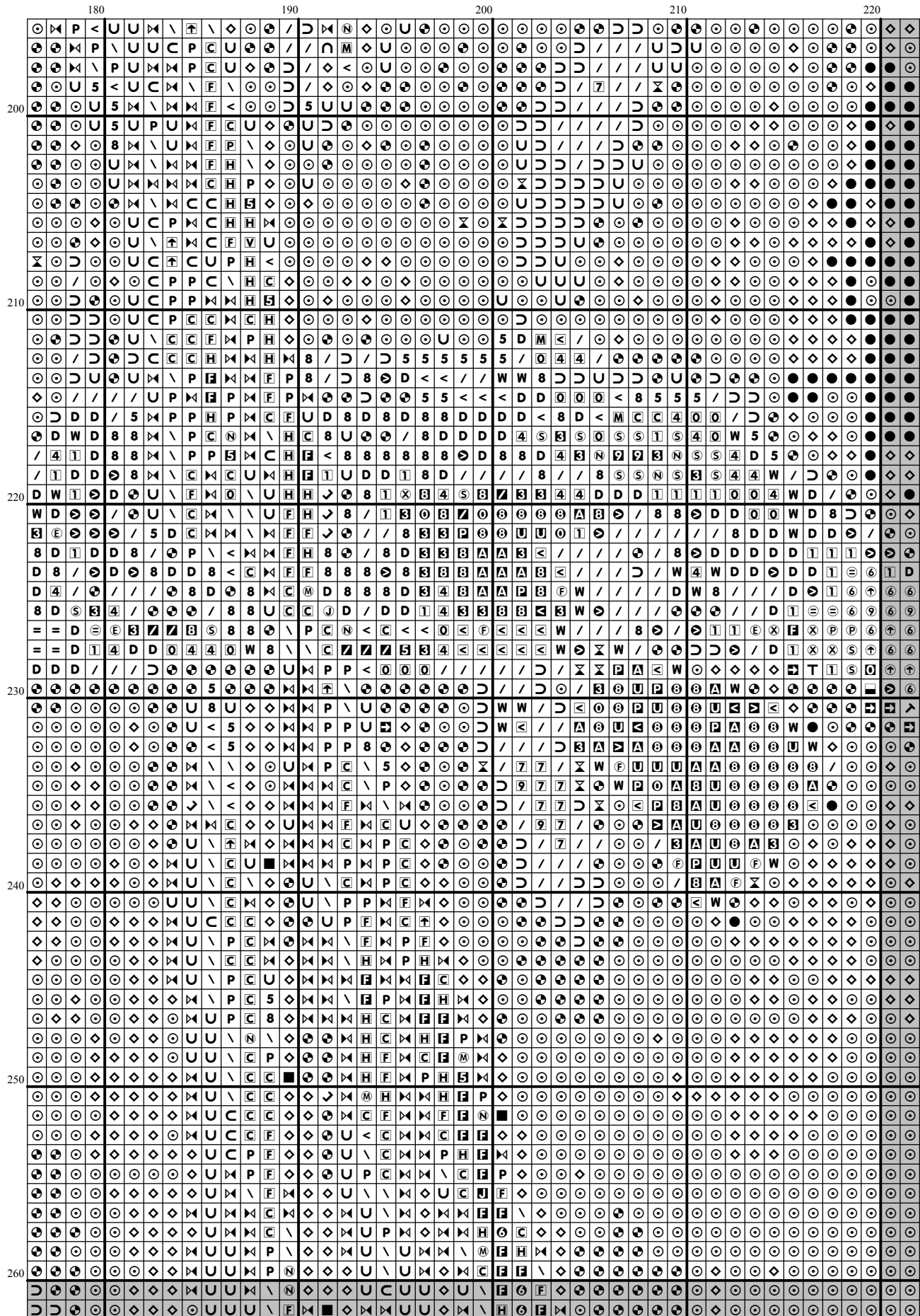


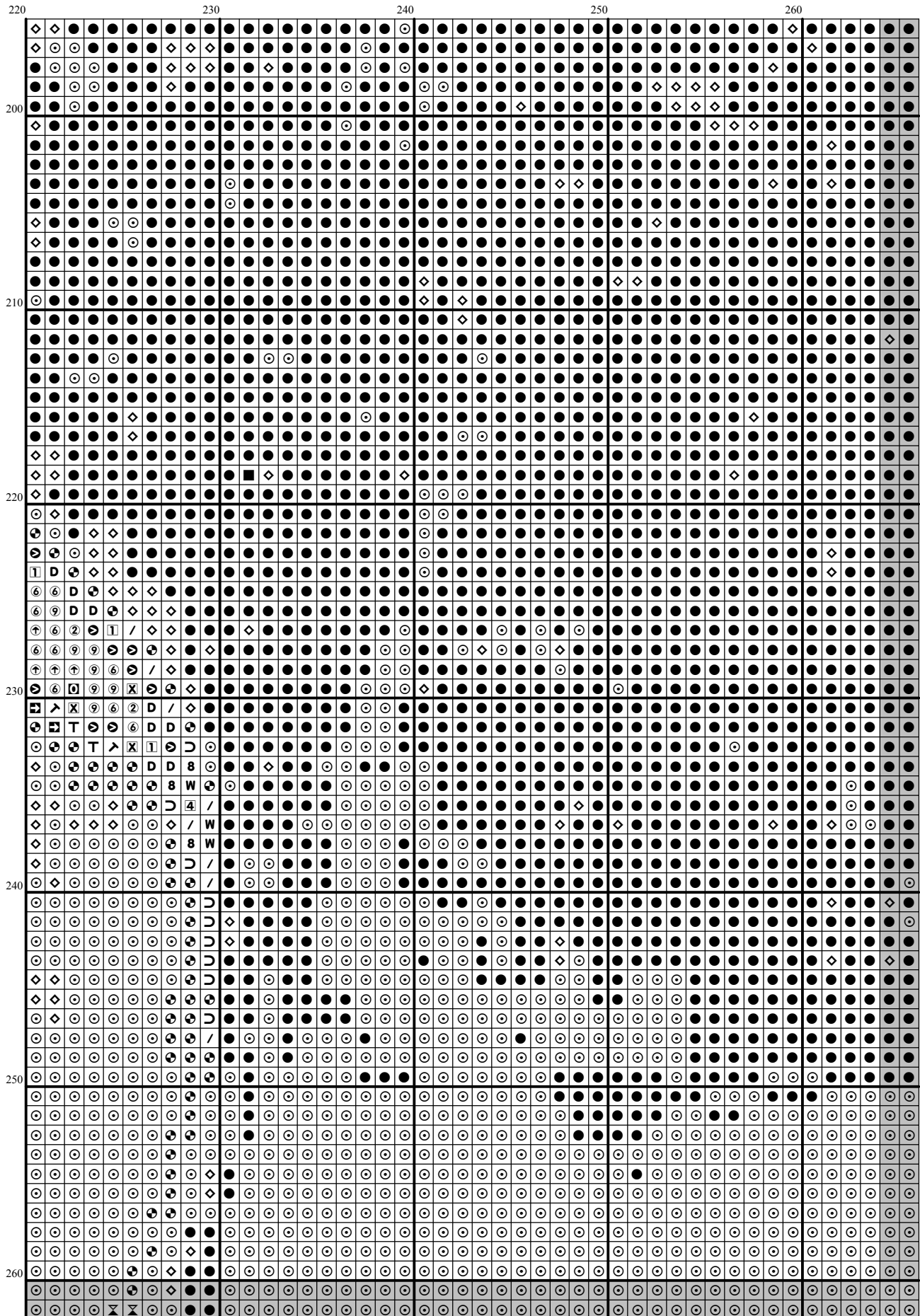


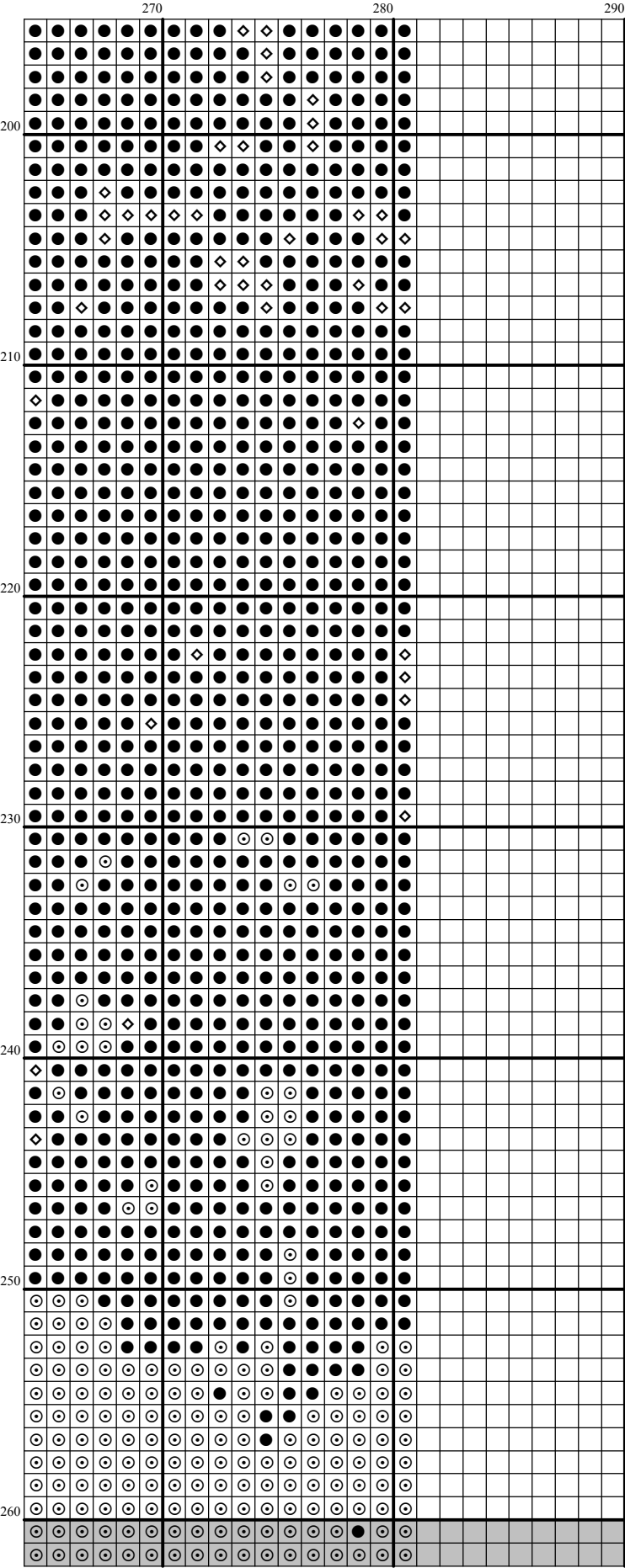


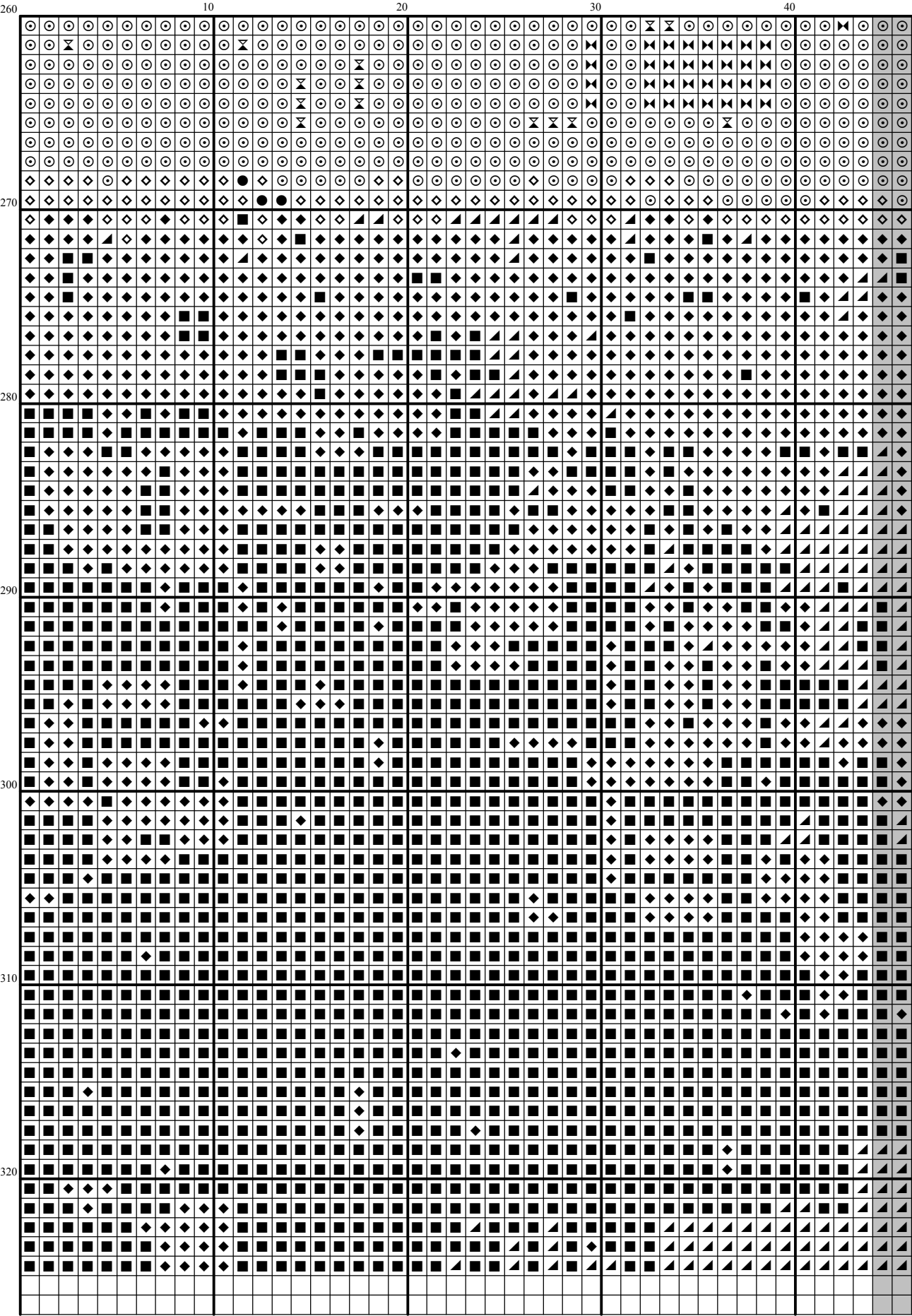


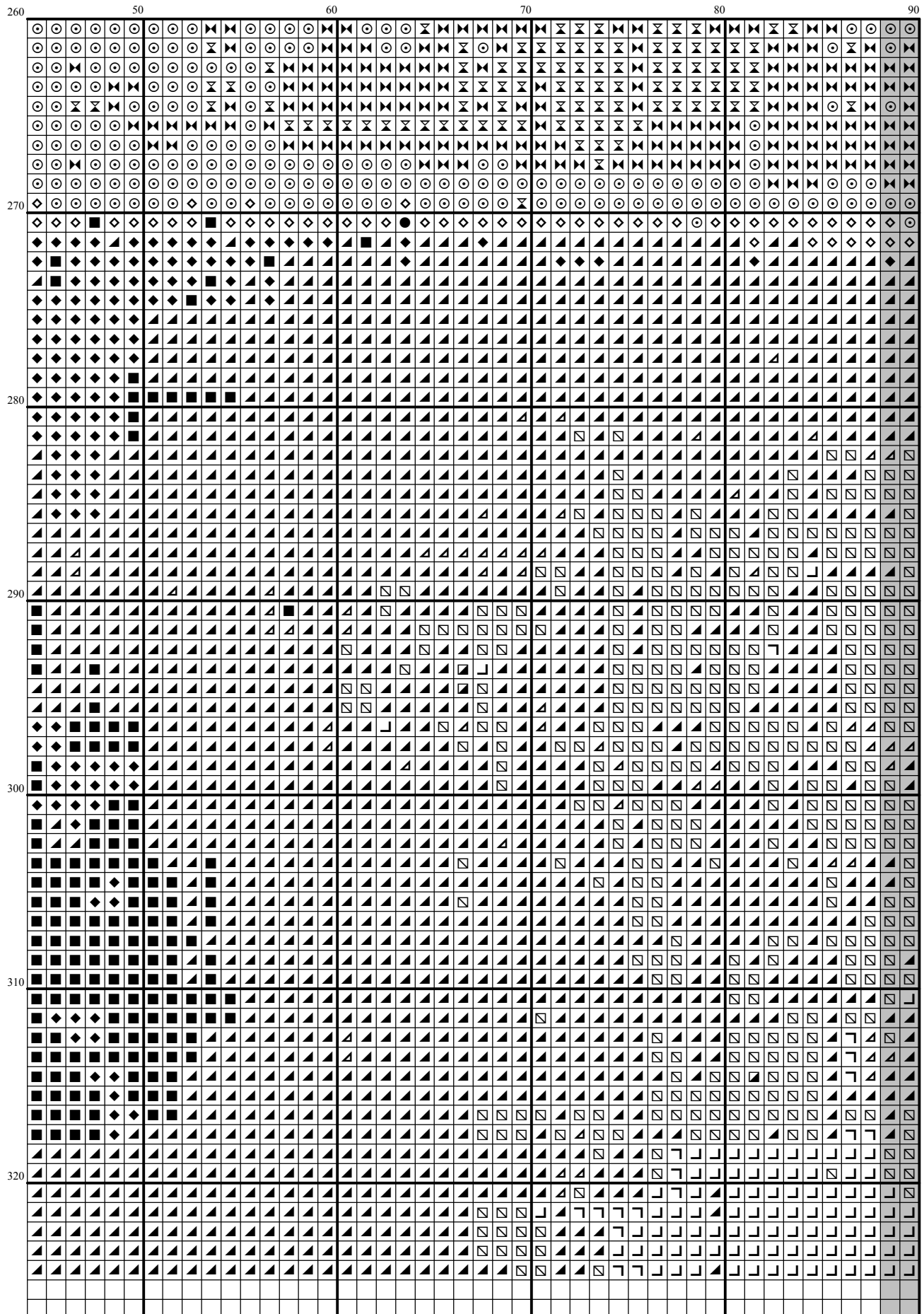


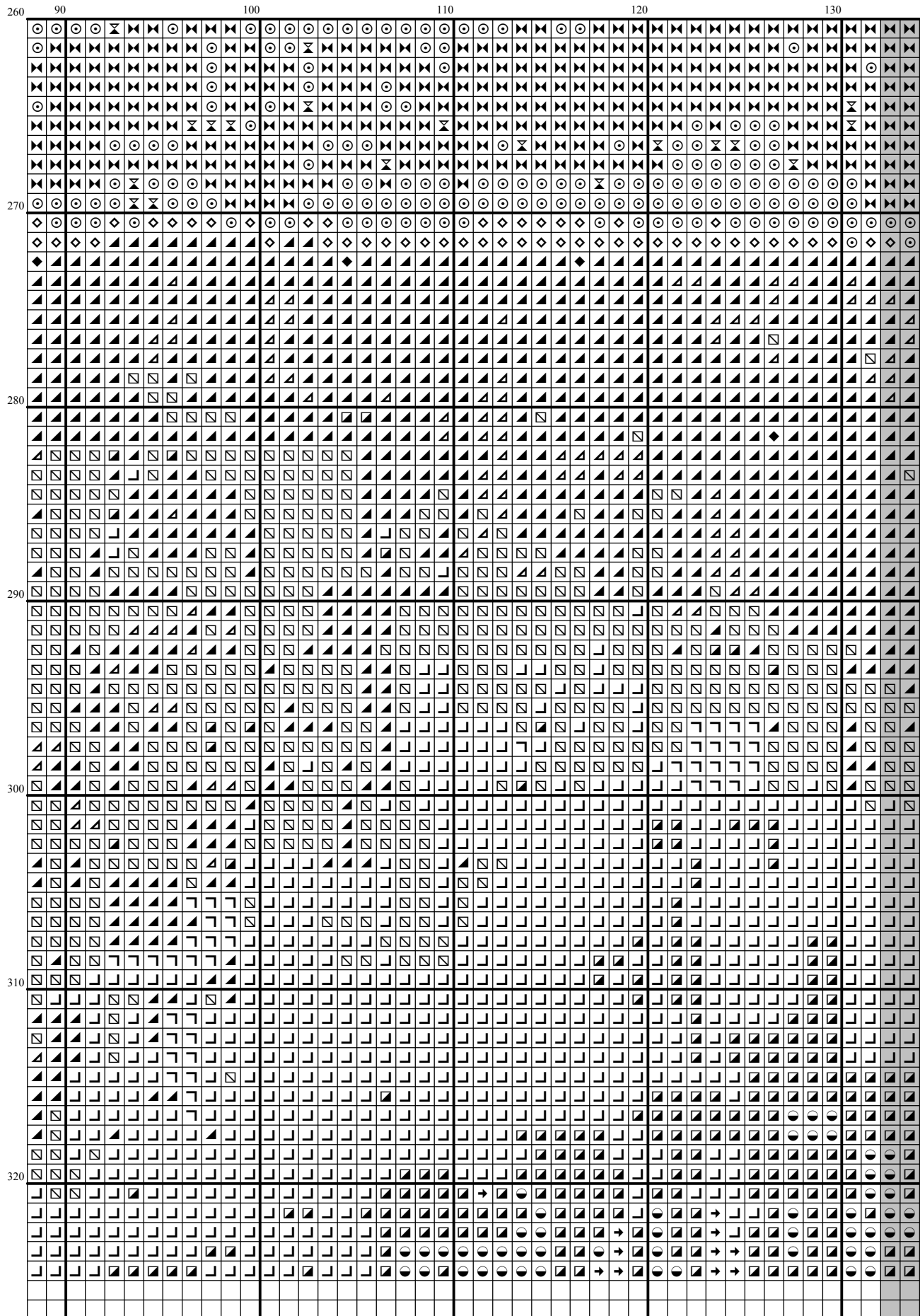


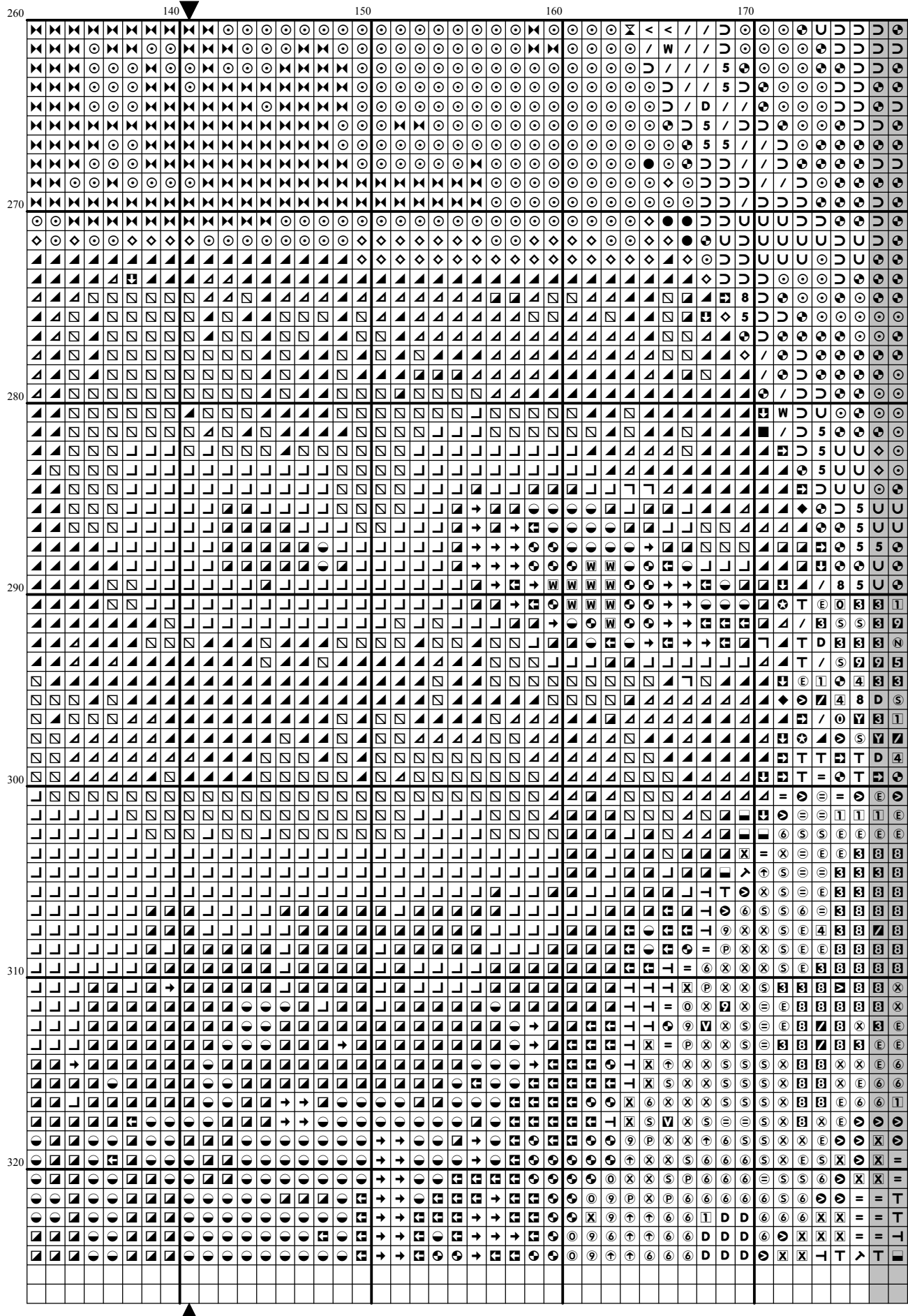


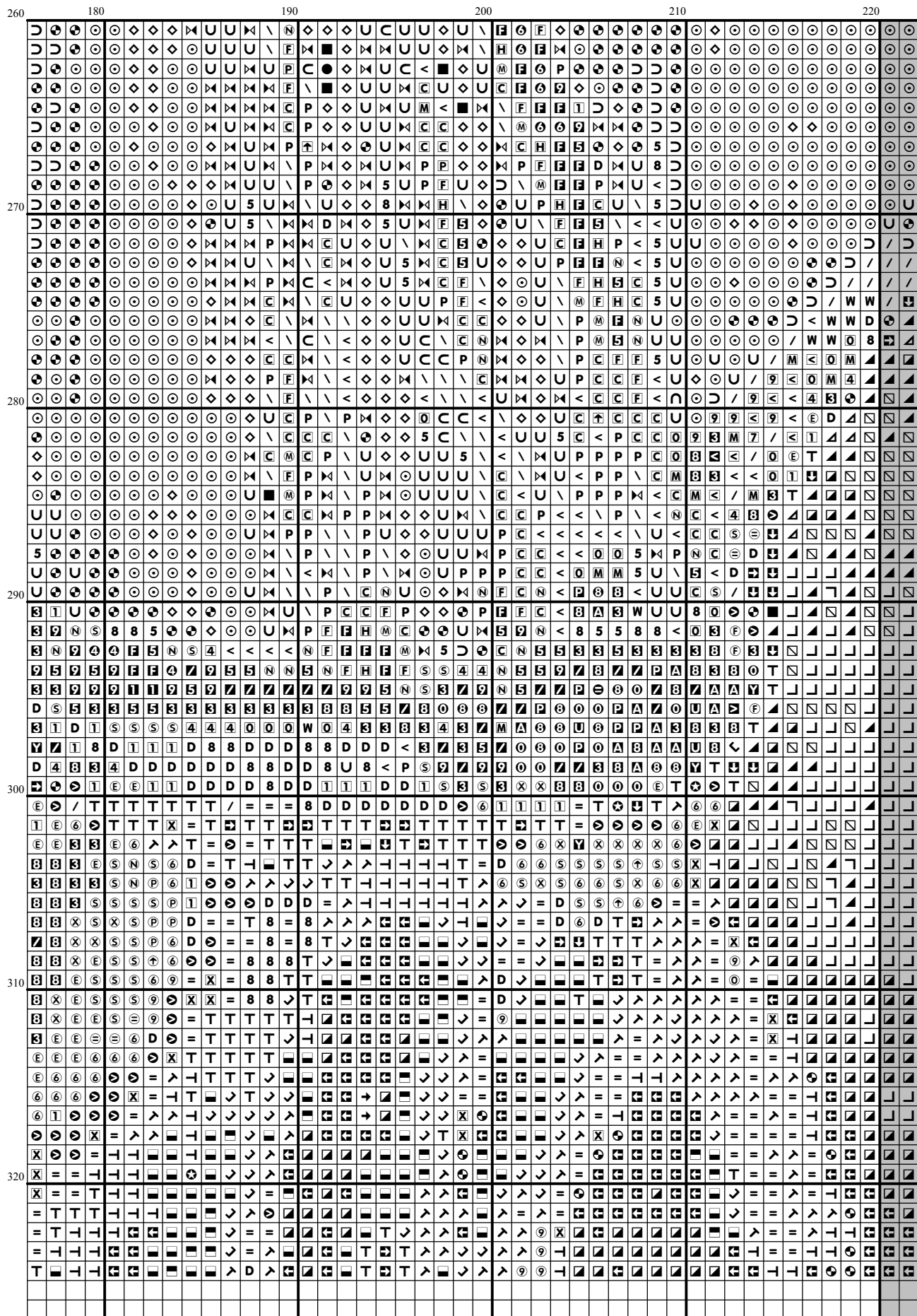


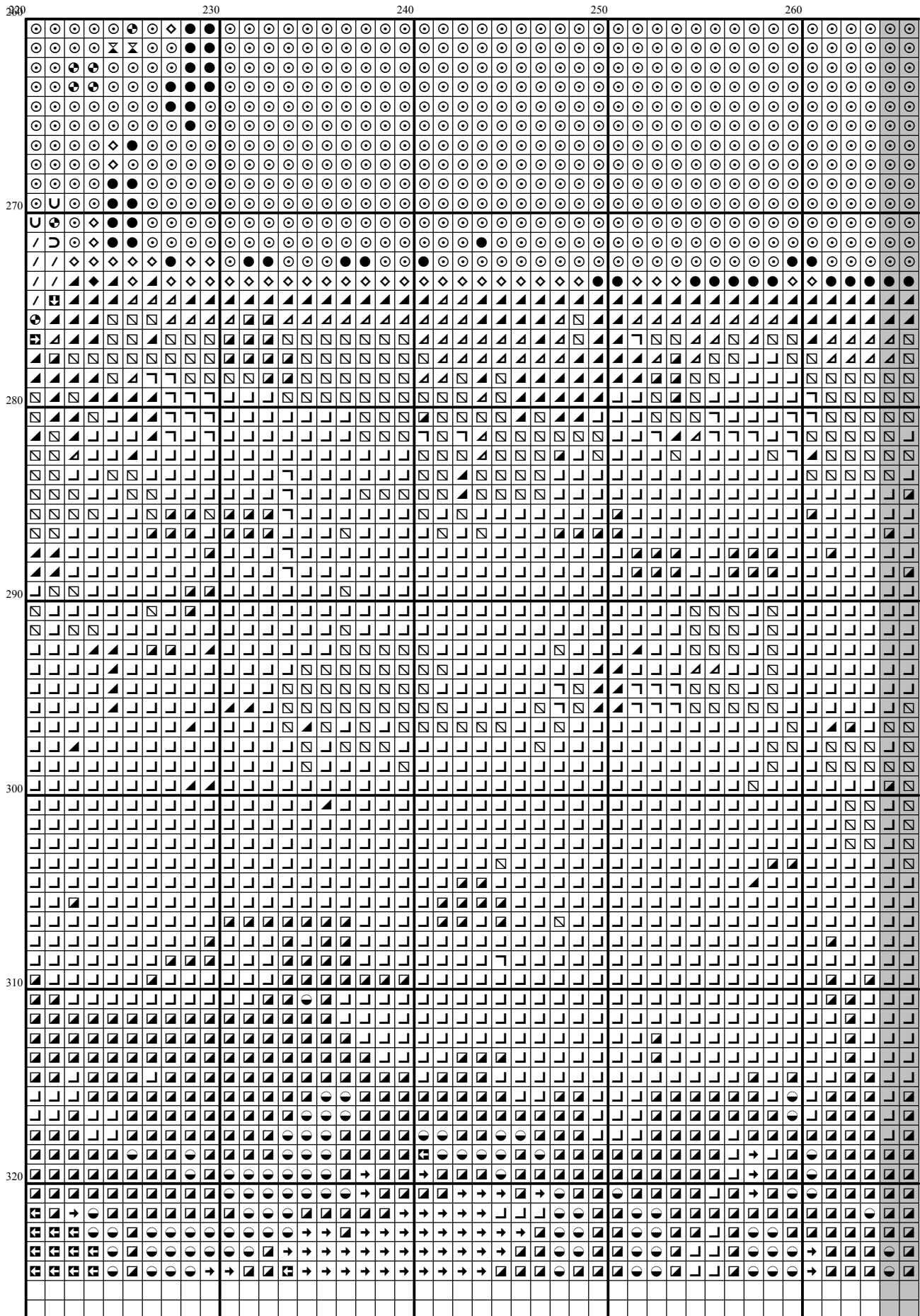


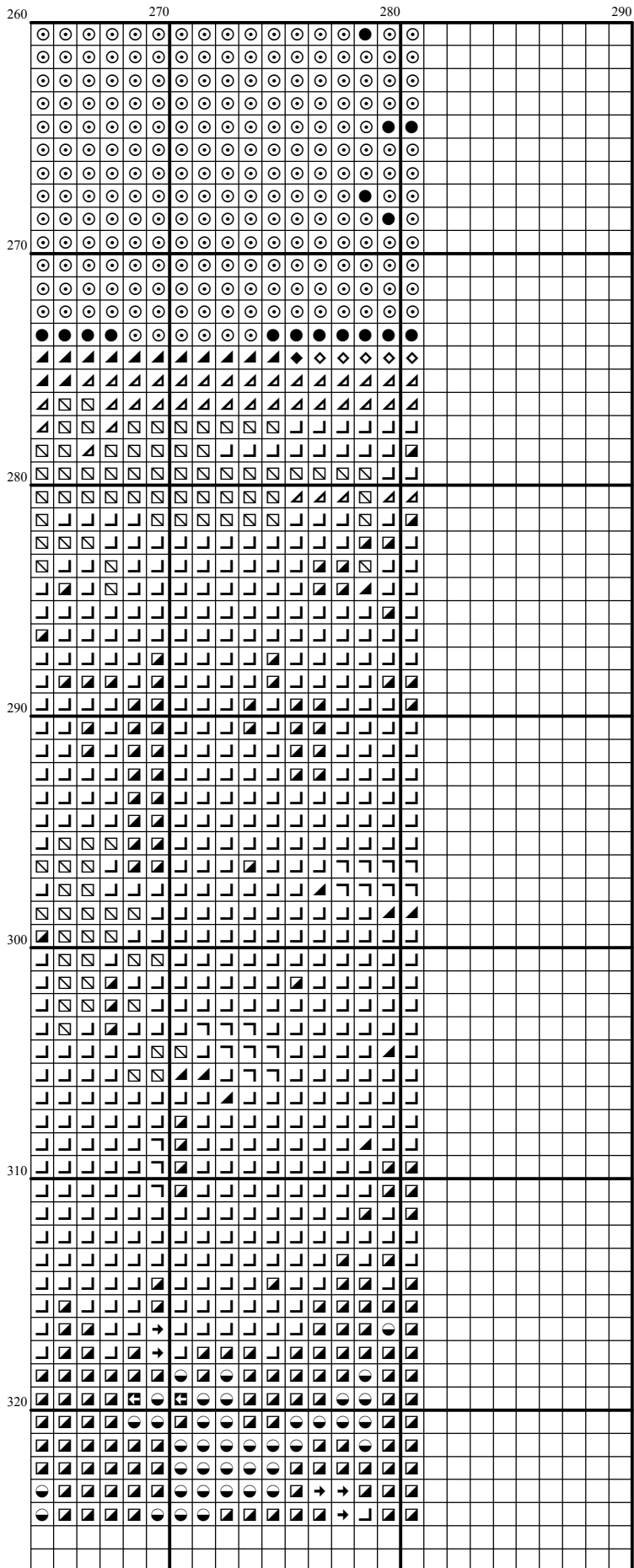












Instructions and Symbol Key for Design "FR157 Lilies"




Fabric: 14 count white Aida

Stitches: 281 x 325 **Size:** 20.07 x 23.21 inches or 50.98 x 58.96 cm

Colours: DMC

Use **2** strands of thread for cross stitch

Sym	No.	Colour Name	Sym	No.	Colour Name
▲	154	Prune rose	◼	157	Light cornflower blue
⌘	158	Deep mauve	◼	159	Light blue grey
◀	160	Storm blue	7	161	Ash blue
M	162	Very light blue	\	163	Eucalyptus green
▲	168	Mouse grey	4	169	Pewter grey
→	221	Mars red	⓪	225	Pale shell pink
■	310	Black	└	315	Antique lilac
/	317	Steel grey	Ⓟ	318	Granite grey
P	320	Fern green	⓪	336	Indigo blue
◼	341	Hydrangea blue	F	368	Nile green
F	369	Bamboo leaf green	⓪	413	Iron grey
W	414	Lead grey	8	415	Chrome grey
1	451	Shell pink grey	Y	453	Turtledove grey
U	501	Pond green	<	502	Blue green
⌘	520	Dark fern green	N	523	Ash green
1	524	Light grey green	V	564	Light malachite green
⓪	642	Earth grey	9	644	Light green grey
8	645	Dark steel grey	D	646	Platinum grey
⊖	647	Rock grey	⓪	712	Cream
U	747	Sea mist blue	⓪	762	Pearl grey
U	772	Celery green	P	775	Summer rain blue
V	778	Antique mauve	■	779	Sepia mauve
6	792	Deep cornflower blue	5	797	Royal blue
E	800	Sky blue	■	801	Mink brown
T	809	Gentle blue	L	814	Deep wine red
⌘	820	Marine blue	⓪	822	Cotton cream
◇	823	Blueberry blue	■	838	Dark wood
⓪	840	Hare brown	⓪	841	Deer brown
◻	898	Teak brown	■	902	Garnet red
A	913	Jade green	∩	924	Dark pearl green
0	926	Grey green	3	927	Oyster grey
7	928	Light pearl grey	∩	930	Slate grey
9	931	Blue grey	M	932	Seagull blue
▲	938	Espresso brown	●	939	Dark navy blue
H	966	Baby green	⌘	987	Basil green
C	989	Fennel green	L	993	Light green
■	3021	Cliff grey	⓪	3023	Light platinum grey
P	3032	Dark antique silver	⓪	3041	Medium lilac
E	3042	Lilac	M	3053	Tweed green
4	3072	Pale pearl grey	T	3364	Sage green
◆	3371	Ebony	●	3685	Dark mauve
W	3721	Earth pink	X	3726	Dark antique mauve
T	3740	Dark antique violet	◼	3747	Pale candy blue
⓪	3756	Cloud blue	5	3768	Storm grey
②	3772	Rosy tan	⊗	3782	Gingerbread brown
↘	3787	Wolf grey	↗	3790	Cappuccino brown
◼	3802	Aubergine mauve	5	3813	Light green
C	3815	Eucalyptus Green	↑	3816	Snake green

	3817	Polar tree green		3834	Grape
	3835	Medium grape		3838	Dark lavender blue
	3839	Mediterranean blue		3840	Light lavender blue
	3857	Dark red wine		3858	Medium red wine
	3860	Taupe mauve		3861	Light taupe
	3863	Otter brown		3864	Light mocha brown

This chart has been designed and printed with our best intentions of being without mistakes. However, the possibility of human error, printing mistakes or the variation of individual stitching does exist, and we regret that we cannot be responsible for this.

Note: The shaded blocks on the chart represent overlapping stitches.
 Copyright © Classic Cross Stitch 2005 All rights reserved.